

General Scrutiny
Committee 11th July 2017
Sustainable Modes of
Travel to School Strategy

Jeremy Callard
Transportation Strategy Manager

Sustainable Modes of Travel to School Strategy

(2017 refresh)

Contents:

- Legal and policy context
- Vision and objectives
- Existing conditions and projects
- Strategy and action plan
- Targets and key performance indicators

Legal and policy context:

- 2006 Education Act – assess, audit, strategy, promote, publish
- Home-to-school travel guidance DfE 2014 – data provided by schools, school travel plans.
- National Policies and strategies: Cycling and walking strategy, DfT (April 2017); Everybody active every day: PHE (October 2014)
- Local Policy: Corporate Plan 2016-2020: “Keep children and young people safe”. Health and Wellbeing Strategy: Ensure that children and young people are fit and well, including keeping all children safe. Local Transport Plan - Policy LTP SC3
- School Standards and Framework Act (1998) – parental choice.

Vision:

“To have a fully integrated transport system where every pupil within Herefordshire, where appropriate, has the option to travel to and from school through active travel choices, improving health, safety and reducing reliance on short distance car journeys”

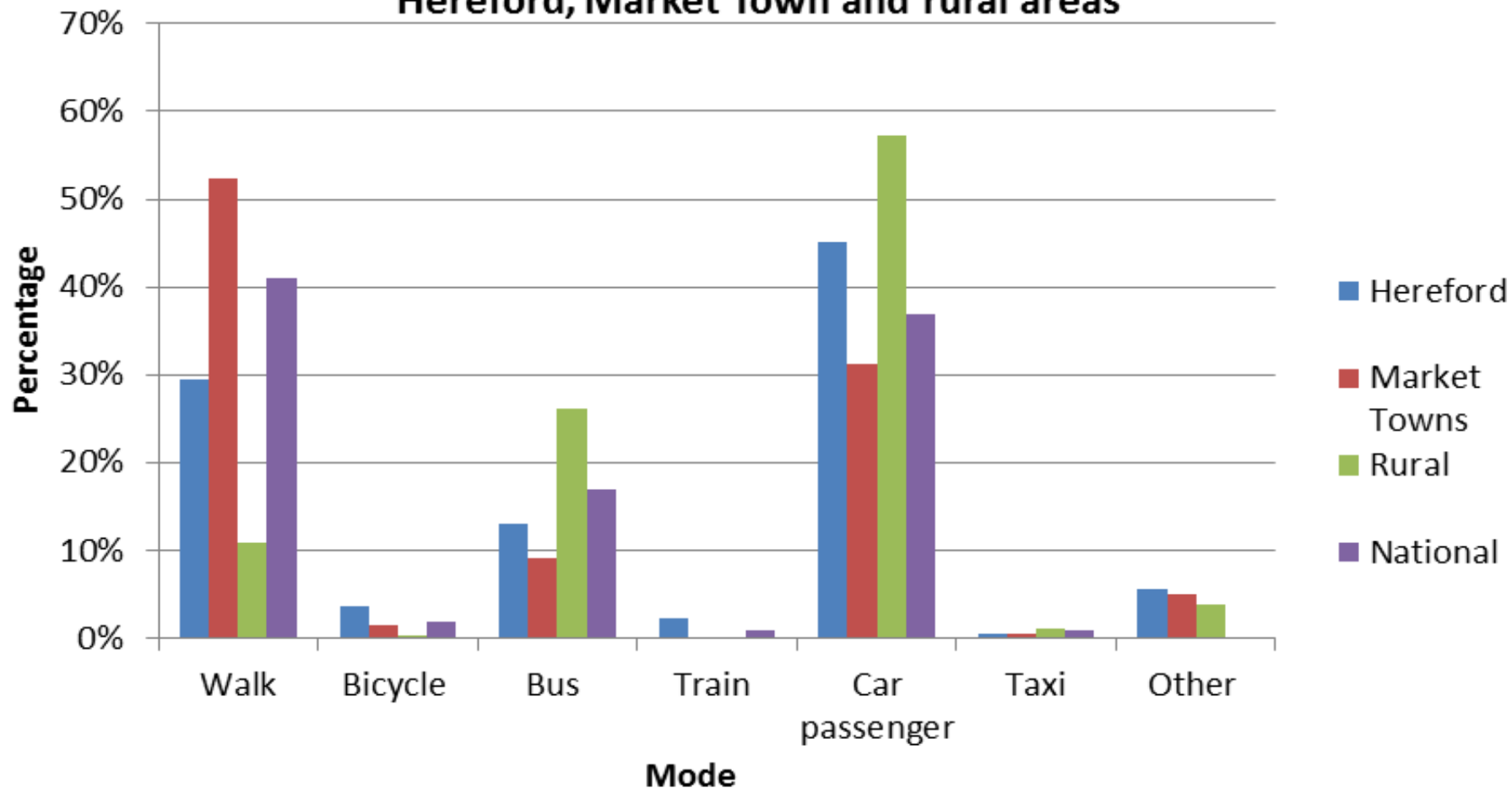
Objectives:

- **To improve the safety of pupils and parents** - through targeted road safety initiatives to educate pupils and by delivering walking and cycling schemes near schools.
- **To improve the health and well-being of pupils-** promote the benefits of sustainable travel through delivery with our partners in public health.
- **To reduce congestion** - by encouraging and facilitating sustainable travel we will reduce car use.

Existing conditions:

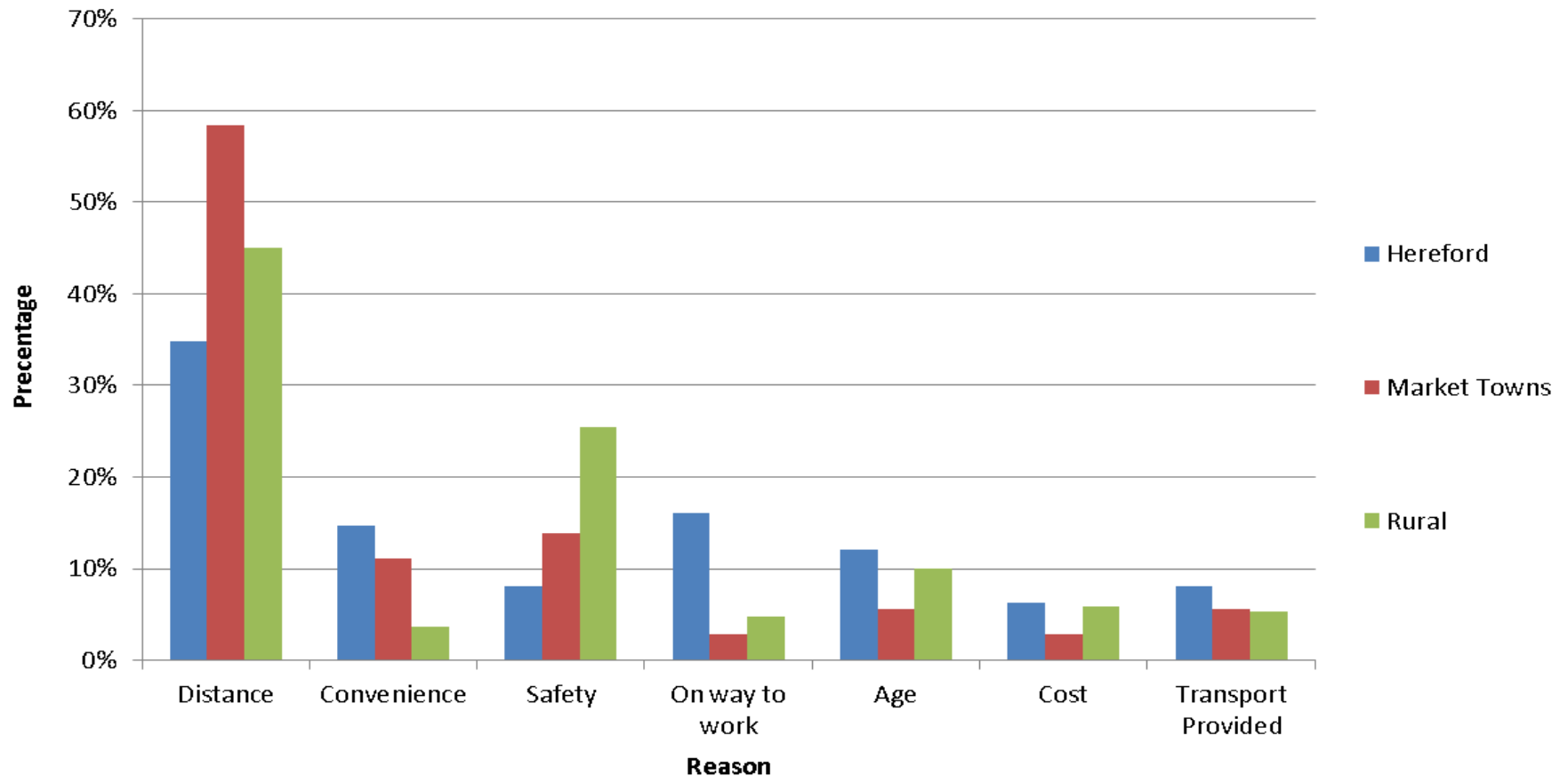
- Herefordshire – dispersed population and long travel distances.
- Data collection – travel survey, 1163 responses, 5.1% of pupils

Modal shares for transport to and from school for National, Hereford, Market Town and rural areas



Existing conditions:

Please state the reasons for you / your child accessing the school using your current mode(s)?



Existing conditions – Infrastructure and travel plans:

- 16 schools have 20mph limits in the immediate vicinity;
- 65 schools have zig-zag “School keep-clear” markings
- 14 zebra crossings, 15 pelican crossings and 8 toucan crossings;
- Cycle racks available at 75 schools;
- 17 schools have parent waiting shelters; and
- 14 schools have traffic calming measures.
- 81 schools (75%) out of the total (104) do not have a valid travel plan - 64 schools have a travel plan although 38 are out of date (>3 years old)

Existing conditions:

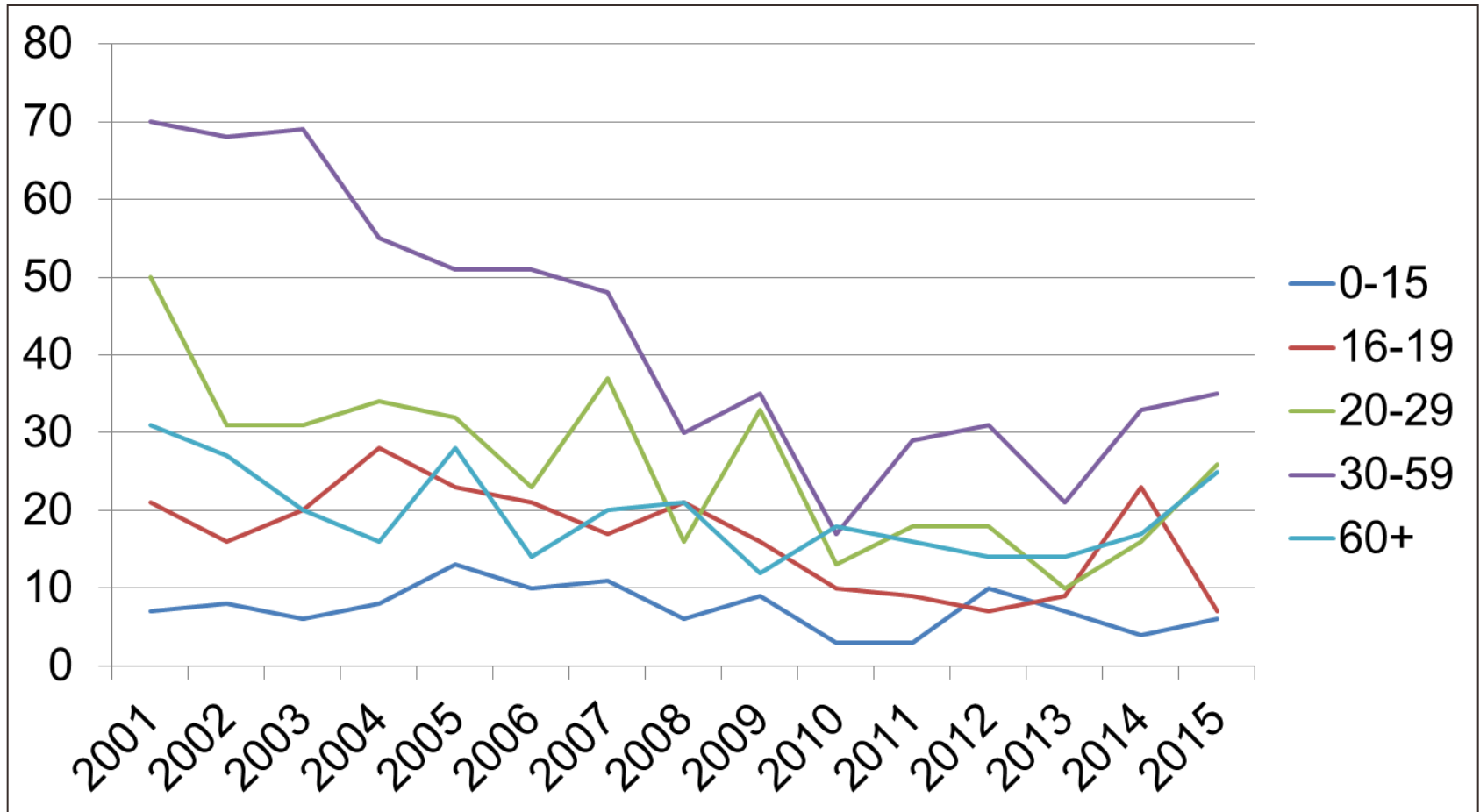
Travel to school provision

- HC transport 3,318 pupils to school. Of these 284 are through our VSPS and 504 receive transport on grounds of hazardous routes
- 3,013 pupils receive free transport to school
- 15% of all pupils within Herefordshire are on local authority arranged transport, either through free transport or through the VSPS

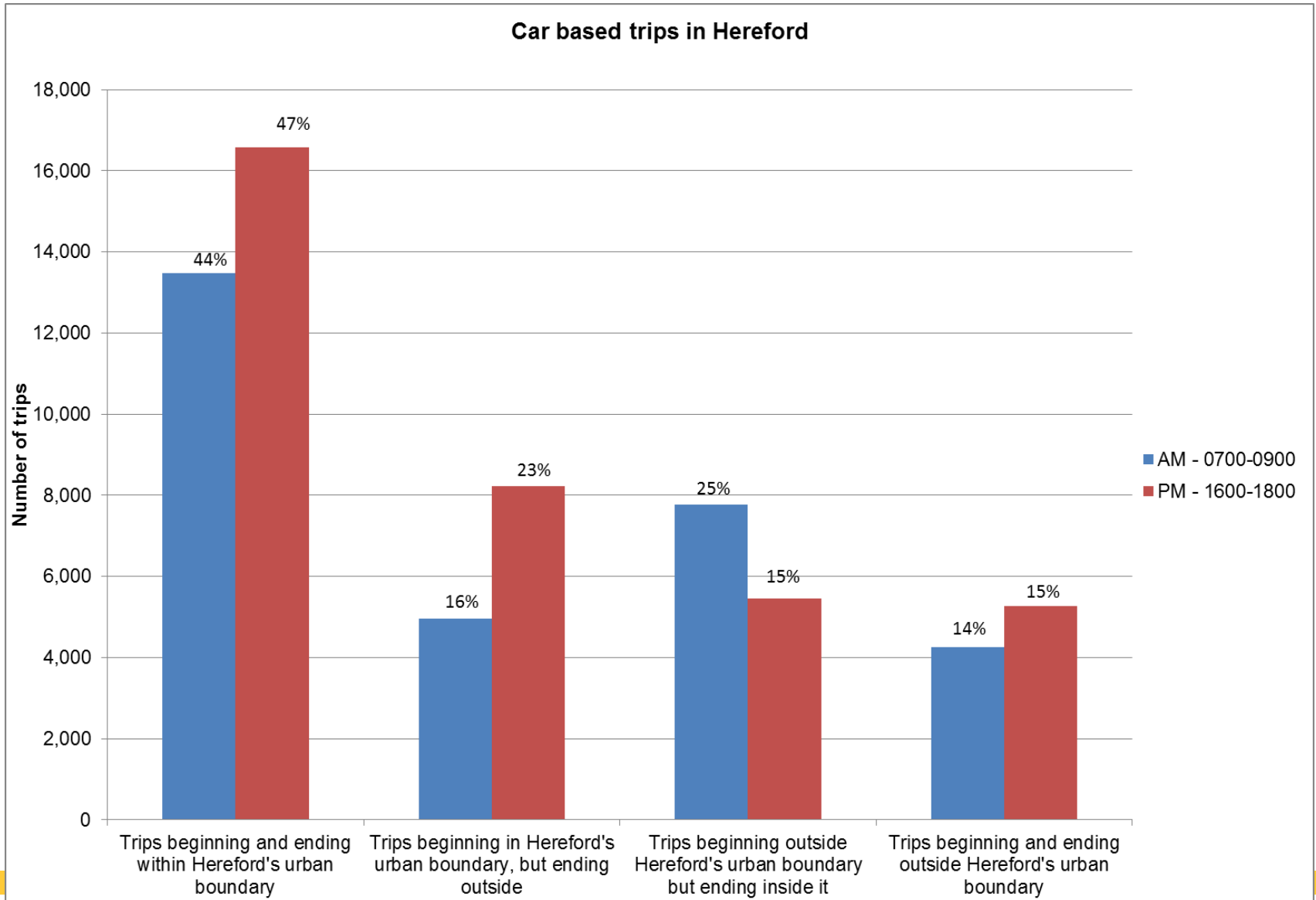
Accidents and health

- In 2015/16, 22.8% of reception pupils were overweight with 9.8% obese (national 9.3%) .
- In year six 33.8% pupils were overweight with 19.8% obese (national 19.8%)
- The numbers of accidents in Herefordshire involving school age children is very low.

KSI casualties in Herefordshire by age



Term time short distance car journeys in Hereford



Examples of school travel support:

- Bikeability – funded by DfT, ranges from the basics of balance and control to journey planning and independent travel.
- Road safety education - pupils in key stage one, year 6, year 7 and year 8
- Crucial Crew - aimed at year 6 pupils - personal safety including road, water and fire safety to key stage two pupils
- Pre-driver and passenger event to year 11 pupils called Dying to Drive.
- School crossing patrols – 12 – 6 funded by HC
- Behavioural change projects funded by the Access Fund – Sustrans - bike and scooter skills, maintenance, bike clubs, walking initiatives, assemblies, class talks, integrating active travel within the curriculum and travel plan writing.
- Change4life initiative - PHE

Infrastructure programming, delivery and funding – Action Plan:

- BBLP Annual Plan - consultation with county councillors and parish councils - locality stewards. Schemes in Neighbourhood Development Plans.
- S106 schemes funded by developers
- Transport Asset Management Plan
- Funding bids:
 - Revenue - LSTF Destination Hereford, Transition Fund, Access Fund
 - Capital – Hereford City Centre Transport Package, South Wye Transport Package, Hereford Transport Package, University City Transport package

Targets and Monitoring:

- Mode share of pupils using sustainable modes of travel;
- Numbers of pupils overweight or obese;
- Number of schools with an up to date travel plan
- Number of casualties involved in traffic collisions aged 0-19 during the AM and PM peak
- Number of pupils engaged in road safety education programs
- Traffic volumes in term-time and non term-time.

Next steps:

- Public/school consultation on draft SMOTS
- Review strategy in light of consultation responses
- Adoption later this year.

Thank you

Number of responses to the questionnaire by school

